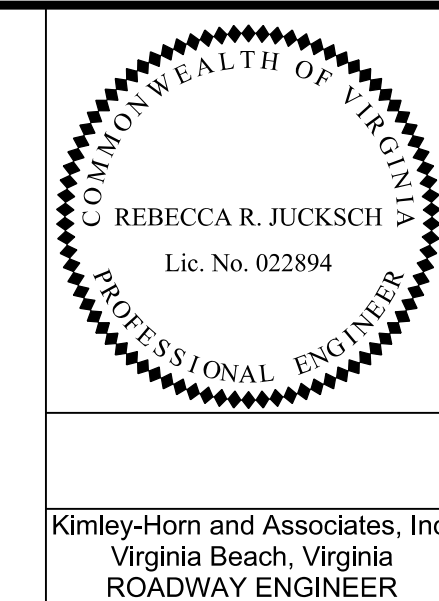


PROJECT MANAGER Samba Secka, P.E. (757) 494-5483, Hampton Roads District
SURVEYED BY VDOT - Woodpecker/Bice and Associates
DESIGN BY Kimley-Horn and Associates, Inc. (757) 213-8600
SUBSURFACE UTILITY BY DATE: The Spectra Group (757) 497-5862 9-01; AccuMark, Inc. (800) 542-2990 10-14; 12-14; 2-17

TYPICAL SECTIONS

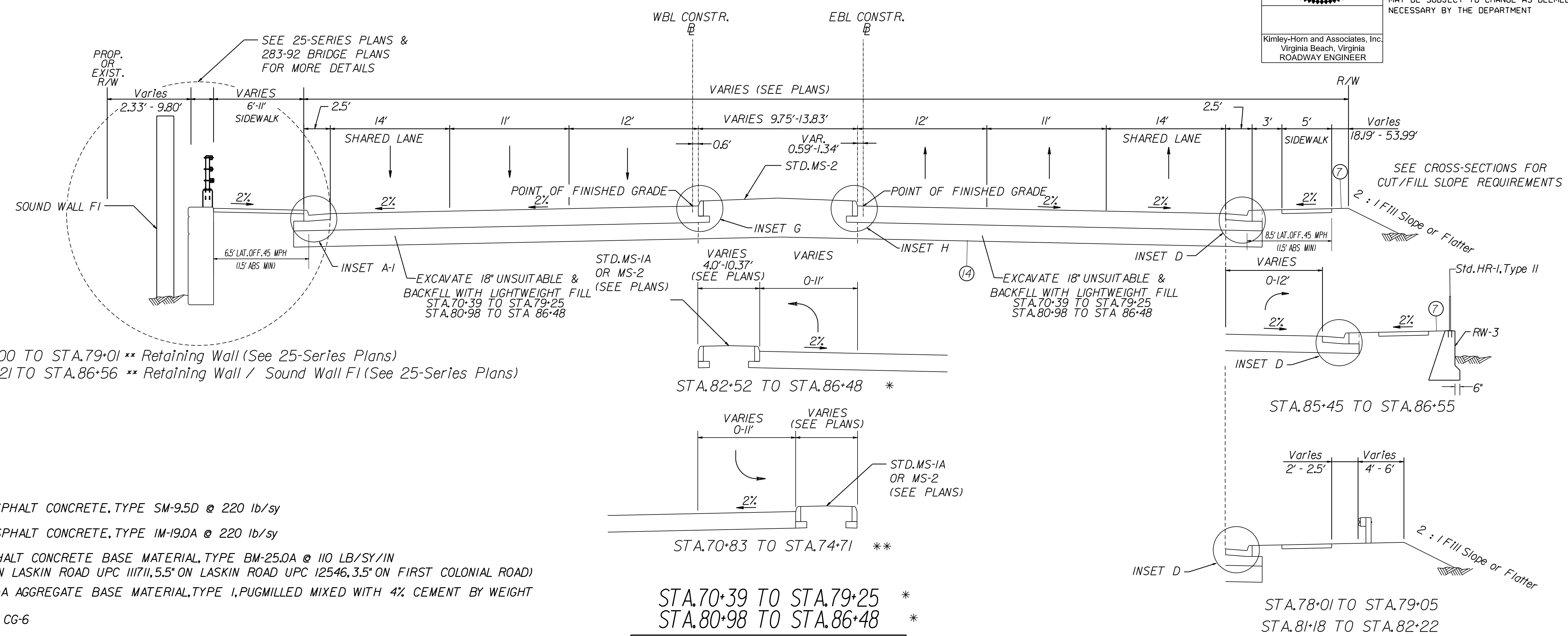
ROUTE 58 (LASKIN ROAD)



REVISED	STATE	ROUTE	STATE PROJECT	SHEET NO.
	VA.	58	0058-134-F02, RW-201 C-501 0058-134-862, RW-201 C-501	2(4)

DESIGN FEATURES RELATING TO CONSTRUCTION OR TO REGULATION AND CONTROL OF TRAFFIC MAY BE SUBJECT TO CHANGE AS DEEMED NECESSARY BY THE DEPARTMENT

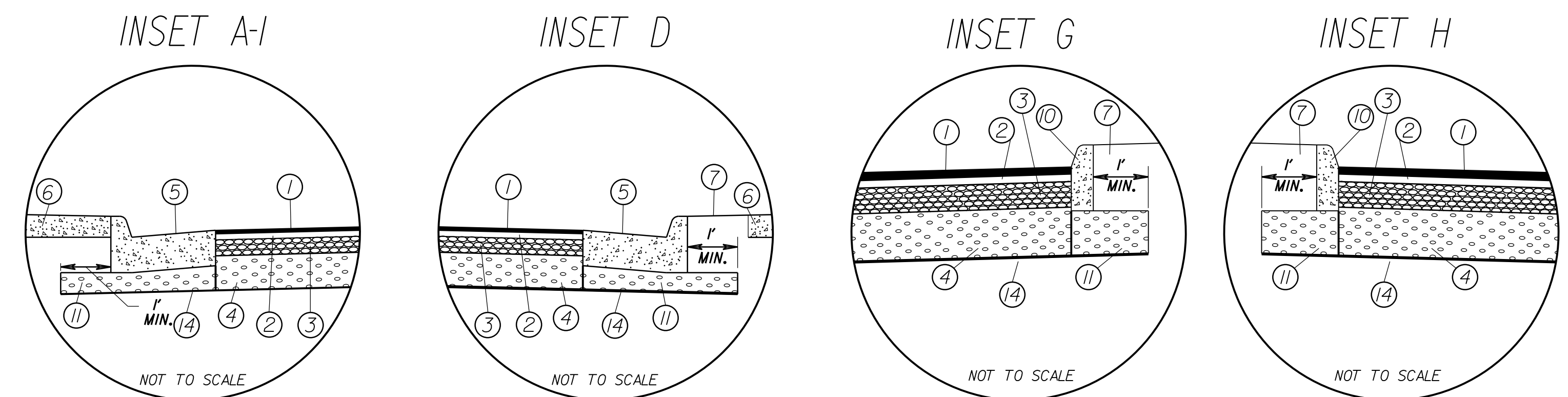
Kimley-Horn and Associates, Inc.
Virginia Beach, Virginia
ROADWAY ENGINEER



- 1 2" ASPHALT CONCRETE, TYPE SM-9.5D @ 220 lb/sy
- 2 2" ASPHALT CONCRETE, TYPE IM-19.0A @ 220 lb/sy
- 3 ASPHALT CONCRETE BASE MATERIAL, TYPE BM-25.0A @ 110 LB/SY/IN (3" ON LASKIN ROAD UPC 111711, 5.5" ON LASKIN ROAD UPC 12546, 3.5" ON FIRST COLONIAL ROAD)
- 4 6" 2-1-A AGGREGATE BASE MATERIAL, TYPE I, PUGMILLED MIXED WITH 4% CEMENT BY WEIGHT
- 5 STD. CG-6
- 6 4" HYDRAULIC CEMENT CONCRETE SIDEWALK (CLASS A3)
- 7 TOPSOIL AND SEED
- 8 ASPHALT CONCRETE, TYPE IM-19.0A VARIABLE THICKNESS (2" MIN.)
- 9 EXISTING PAVEMENT
- 10 STD. CG-2
- 11 4" (MIN.) AGGREGATE BASE MATERIAL, TYPE I, SIZE 2-1-B
- 12 ASPHALT CONCRETE BASE MATERIAL, TYPE BM-25.0A VARIABLE THICKNESS @ 110 LB/SY/IN
- 13 TYPE II COMPOSITE PAVING GRID ***
- 14 GEOTEXTILE FABRIC REQUIRED AT BOTTOM OF EXCAVATION

*** PAVING GRID SHALL BE FULL LANE WIDTH PLUS 12" MIN. OVERLAP OF LONGITUDINAL JOINTS AND WHERE NEW PAVEMENT MEETS THE JOINTED CONCRETE OR COMPOSITE PAVEMENT

NOTE:
SEE PLANS FOR CONNECTION TO EXISTING ROADWAY FROM STA.92+87 TO STA.96+24



* STATIONS BASED ON EBL CONSTR. @
** STATIONS BASED ON WBL CONSTR. @

SEE PLAN SHEETS FOR LOCATION OF EXISTING PAVEMENT DEMOLITION.

PROJECT	SHEET NO.
0058-134-F02 0058-134-862	2(4)